

COMPANY PROFILE



An ISO 9001:2015 Certified Organization

The Consultancy & Engineering Solutions for the Sustainable Environment

Surat Office : Akshar Park, Near Dhara Complex, Bhatar Road, Surat

Email- servicesbyakone@gmail.com, akoneservices7@gmail.com; akone.info@gmail.com

Phone- +91 9909968953, 9450501471

Delhi-NCR: A-25, Saipark Appt. Sec.87, Faridabad-121002 (HR) India

Agra Office: 64/218-A, Madhu Nagar, Agra-282001 India

Reg. Address: 176-B, 4/2, Paschim Vihar Colony, Salempur Pataura, Mohan Road, Lucknow - 227107



CERTIFICATE OF REGISTRATION

The Certification Body of Privaca Quality Certification Certifies That



AKONE SERVICES

176-B, 4/2, Paschim Vihar, Salempur Pateura, Mohan Road, Lucknow-227107 (UP) India

Privaca Quality Certification certify that the management system of the above organization has been audited and found to be in accordance with the requirements of standard below

ISO 9001:2015

The Quality Management System is applicable to:

Providing Environmental Consultancy and Engineering Solution.

The registration is not a product quality certificate, subject to successful completion of surveillance audits, Certificate is the property of privaca and returned when demanded

Certificate Number: EU/QMS195/21041

Original Registration Date:	13/08/2020
1st Surveillance Due Date:	12/08/2021
2nd Surveillance Due Date:	12/08/2022
Certificate Expiry Date:	12/08/2023

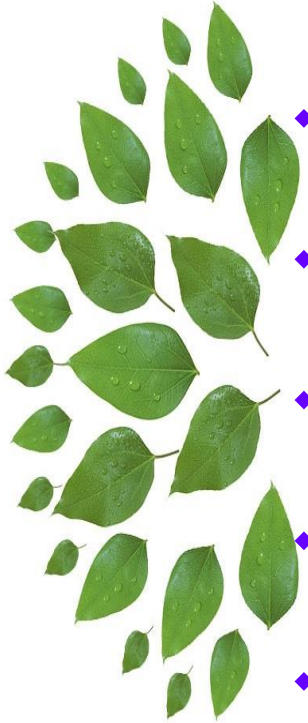


Certification Manager

Privaca Quality Certification

101, Rue, Krunn, L-6453, Echternach Luxembourg, Luxembourg
Website: www.privacacert.com, info@privacacert.com
Visit for verification on www.privacaert.com

THE FIVE MANTRAS OF AKONE



❖ *Assure the Best Quality in Services.*

❖ *Kind with Nature!*

❖ *Overcome the Pollution Potential!*

❖ *Negate the Vulnerability!*

❖ *Environmental conditions to be improved for protection of planet earth!*

ABOUT AKONE

- ❖ AKONE Services comprises a team of highly talented professionals, who work in sync with clients ensuring that the defined assessment, survey or reporting is executed with high level of efficiency.
- ❖ Our proficient team consists of Environmentalists, Engineers, Chemists, Geologists, Industrial hygienists, Technicians, Research Associates, Sociologists, Policy makers, Economist, Legal Advisors and others with expertise in various key areas.
- ❖ The personnel with AKONE has a proven successful track record of working with industry and institutions and in executing multi-faceted projects funded by organizations like World Bank, Asian Bank, MoEFCC, SEAC/SEIAA, amongst others.

❖ *Safety*

- We create a working environment that promotes safe performance.



❖ *Quality*

- We always strive for excellence in the services we provide and in the results we produce.



❖ *Integrity*

- We are committed to the highest ethical standards.



❖ *Creativity*

- We believe in looking at challenges and opportunities and in exercising our curiosity.



❖ *Accountability*

- We take responsibility for all of our decisions and actions.

ACCOUNTABILITY



❖ *Teamwork*

- We work together to succeed.





COMPANY POLICY

- ❖ We are dealing with Environmental Consultancy and Engineering Solutions which satisfies the statutory, regulatory, stakeholders' and others' requirement.
- ❖ Akone Services has commitment towards quality services through systematic techniques confirming constant development through intermittent reviews of performance.

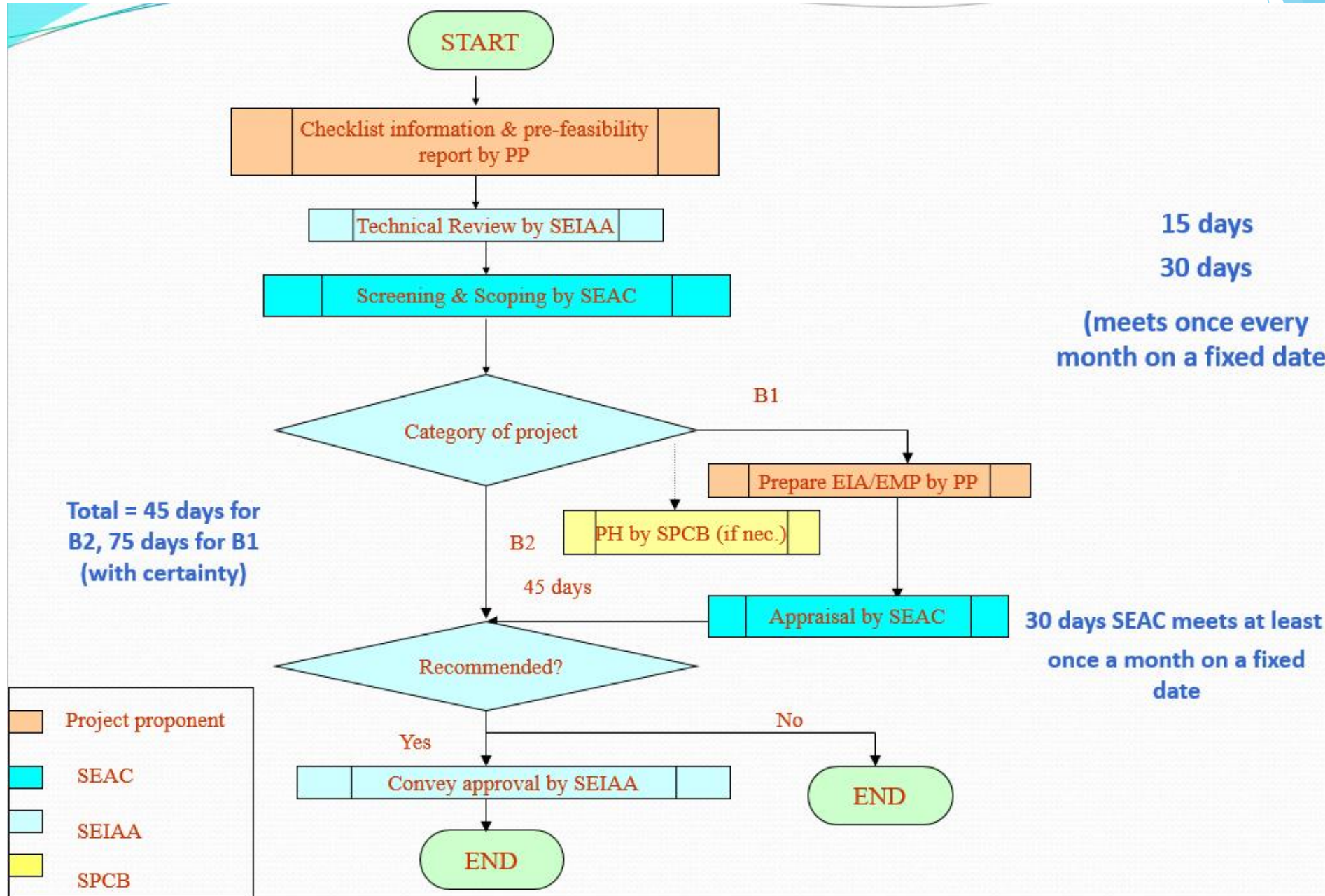


- Environment Clearance (EIA)
- Forest Clearance
- Wildlife Clearance
- CRZ Clearance
- Carbon Credit Scheme
- Infrastructure Development
- CGWA Permission
- Water Audit / Budgeting
- Green Building Certification
- Consent to Establish/Consent to Operate under Air and Water Act
- Authorizations for Hazardous Substances/Bio medical waste
- No Objection Certificate - Forest Diversion / Non-Forest Land
- Wildlife Conservation Plan/Mangrove Management Plan
- No Objection Certificate - from Revenue Department /Authority
- No Objection Certificate - Storage of Diesel/Hazardous Chemical/PESO
- Biodiversity Assessment
- Ecology and Biodiversity Study
- Hydrodynamic Study
- Energy Conservation Building Code
- Solar System
- Water Shed Management
- Half Yearly Environment Compliances
- Submission of Form V/Form IV- Environment Financial Statement
- Environmental Audits
- Safety Audit
- Risk assessment- HAZOP, Hazid, Tree Analysis etc.
- Modelling Studies
- Geospatial Studies/GIS Studies
- Geology and Hydrological Studies
- Social Studies (SIA), R&R, RAP
- Land Use /Land cover studies
- Marine Studies
- Environment Legal Advice
- Waste Water Treatment –Consultancy, Design & Management
- Design and Architect
- DPR and Feasibility Report
- Environmental Testing
- Landscape Management
- Industry license
- Factory License
- Chemical Risk Assessment
- Rainwater Harvesting System

❖ *Environmental Impact Assessment/Environmental Management Plan*

- All new projects or activities, expansion and modernization of existing projects, any change in product-mix listed in the Schedule to the EIA Notification 2006 and its amendments requires prior Environmental Clearance from MoEFCC/SEIAA.
- On basis of Terms of reference issued by the Expert Appraisal Committee an EIA study is conducted and Public Consultation is required.
- EIA report will be prepared & presented to the EAC/SEAC. Based on the recommendations of EAC/SEAC the MoEFCC/SEIAA grants Environmental Clearance accordingly.
- Preparation of environmental management plan is required for formulation, implementation and monitoring of environmental protection measures during and after commissioning of projects.





❖ *Pollutant Apportionment Study/Pollution Load mapping*

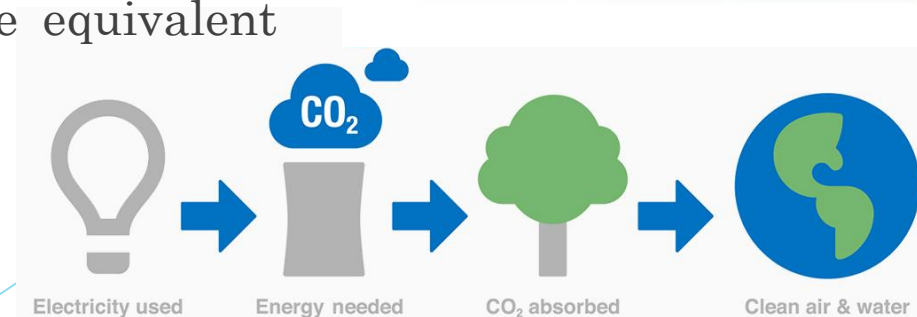
- Since, Air Quality is affected by a variety of complex sources, detailed scientific studies are required for identification of major sources, assessing their contributions to air pollution and suggest mitigation measures taking into consideration.
- The study focuses on characterization and apportionment of PM_{10} to have a better understanding and correlation between source and receptors.



❖ *Carbon Credit Scheme*

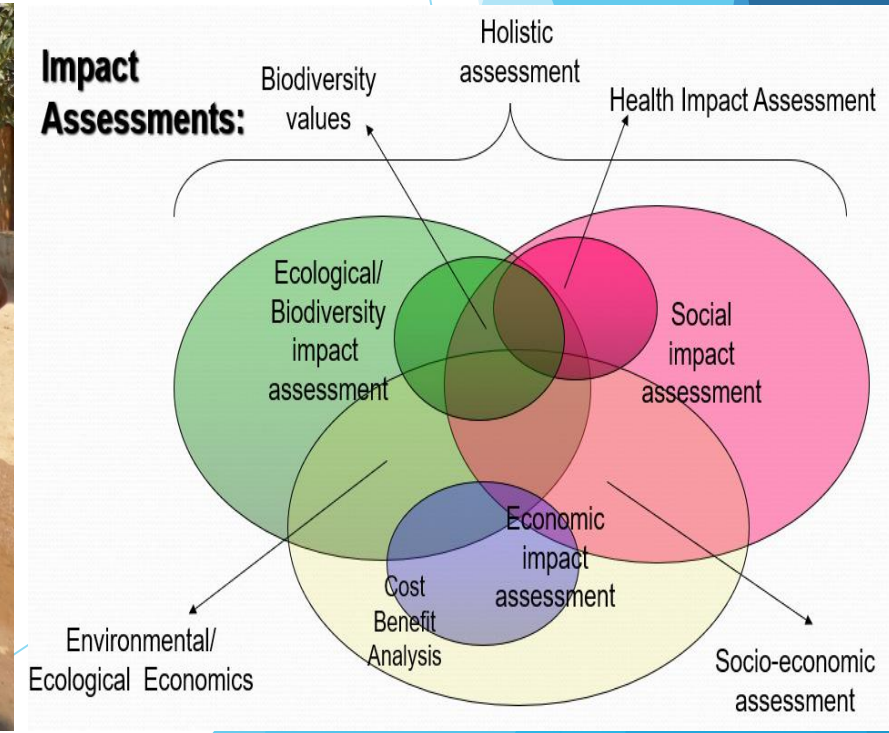
- It is generic term to assign a value to a reduction or offset of greenhouse gas emissions. usually equivalent to one tonne of carbon dioxide equivalent.
- A carbon credit is a generic term for any tradable certificate or permit representing the right to emit one tonne of carbon dioxide or the equivalent amount of a different greenhouse gas.

Carbon offsets



❖ *Social Impact Studies*

- Social Impact Assessment includes the processes of analyzing, monitoring and managing the intended and unintended social consequences, both positive and negative, of planned interventions (policies, programs, plans, projects) and any social change processes invoked by those interventions.
- We have dedicated team for social impact assessment and public consultation for the development activity.



SITE APPRAISAL STUDIES

❖ *Site Selection and Liability Studies*

- We begin a site selection project by working with our client to outline information on the project.
- A detailed information request will follow, divided into unique sections to be completed by different units of the client's organization, *i.e.* engineering, manufacturing, human resources, logistics, legal, finance, and management.
- The final action closing the site selection process is the Regional Administrator's signature on the Site Investigation Report.

❖ *Rehabilitation & Resettlement Studies*

- This study to understand the traditional habitat in rural areas and design of demonstration units for subsistence agriculturists and landless laborers provided Foundation a different kind of challenge.
- Large development projects entail resettlement and rehabilitation of project affected persons and generally the public agency approach fails to recognize the specific physical and sociocultural needs.



❖ *Land Use/Land Cover Studies based on remote Sensing*

- Land Use and Land Cover mapping is of great significance in scientific, scholarly research, planning and management.
- Regional land use pattern reflects the character of interaction between man and environment and the influence of distance and resources based on mankind's basic economic activities.
- Remotely sensed satellite images provide a synoptic overview of the whole area in a very short time span.

❖ *Carrying Capacity based Regional Studies*

- Current understandings of water resources carrying capacity are analyzed with reviewing the concept of carrying capacity.
- An Eco-economic analysis on water resources human system is performed and the aquatic ecosystem as a whole is advocated as the main carrying body.

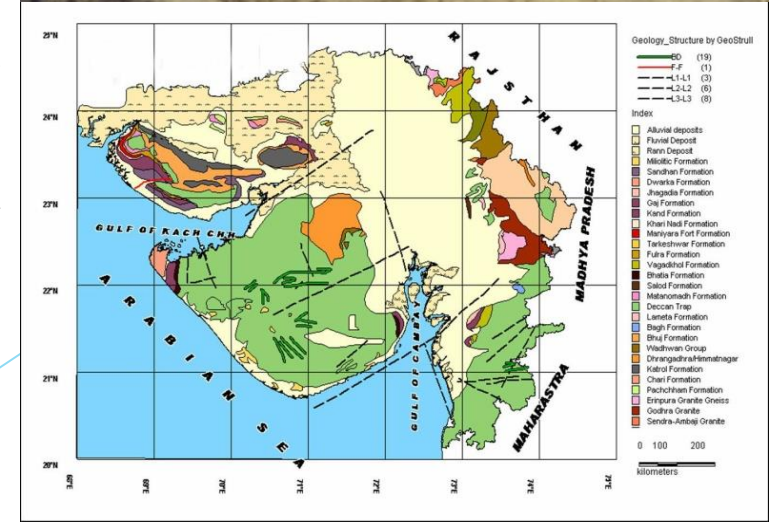


❖ *Due Diligence Studies*

- “Due Diligence” is a term used for a number of concepts involving either an investigation of a business or person prior to signing a contract, or an act with a certain standard of care.
- A common example of due diligence in various industries is the process through which a potential acquirer evaluates a target company or its assets for acquisition.

❖ *Geological & Hydro-geological Studies*

- Geology studies the composition of the Earth’s solid surface and interior, though techniques can be used to study interstellar bodies as well, to an extent.
- Research papers regarding geology often take into account historical geological activity and relate it to contemporary aspects of geology.



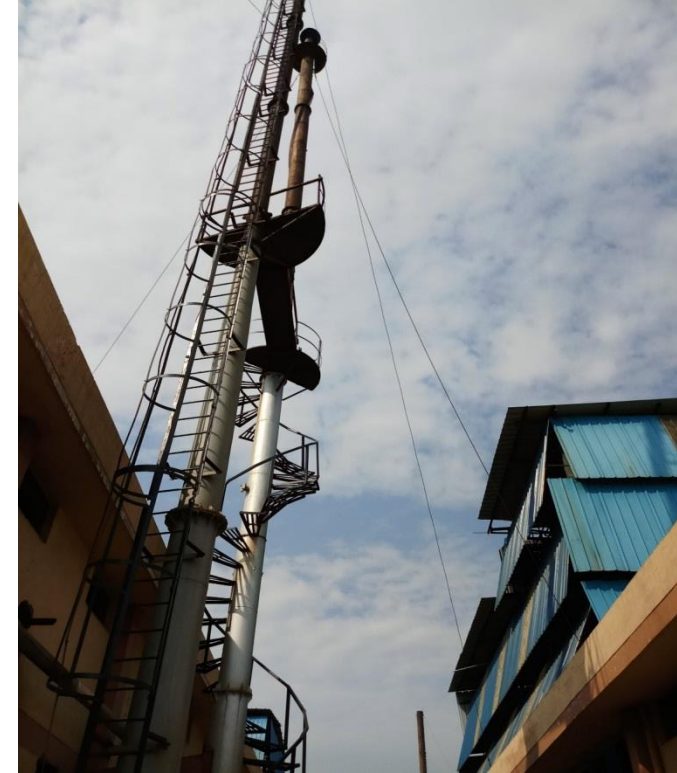
MODELING SERVICES

❖ *Air Modeling*

- Air quality models mathematically and numerically simulate the physical and chemical processes, based on inputs of meteorological data and source information.
- Air quality models are used during the environmental clearance process to verify that a new source will not exceed ambient air quality standards and determine appropriate control requirements.

❖ *Risk Assessment Modeling*

- Comprehensive multi-pathway human health risk assessment calculates risk values for multiple chemicals, from multiple sources, at multiple exposure locations simultaneously.
- We follow the Human Health Risk Assessment Protocol established by EPA.
- The results of the modeling estimate the nature and probability of adverse health effects in humans who may be exposed to chemicals in contaminated environmental media, now or in the future.





❖ *Noise Dispersion Modeling*

- The location and acoustic sound power levels of potentially critical noise sources and its propagation can be assessed using mathematical models, which enable digitizing a ground map (containing ground contours).
- We generate noise emission levels taking into account factors such as source sound power levels and locations, distance attenuation, ground absorption, air absorption, and shielding attenuation and meteorological conditions.

❖ *Ground Water Modeling*

- This with the 3D analysis is critical to the understanding of hydrogeologic and contaminant systems.
- Hydrogeologic and chemical distributions are multi-dimensional in nature, understanding and communicating your results is greatly enhanced by utilizing advanced groundwater modeling techniques with three-dimensional graphics.
- This allows us to select and apply the most cost-effective modeling techniques for the problem to be addressed.



❖ *Langem Modeling*

- Land Fill Gas Emission Modeling is used to estimate emission rates for total landfill gas, and individual air pollutants from municipal solid waste landfills.
- These emissions estimates establish the requirements for gas collection and control system installation and operation.
- The final step is to calculate LFG recovery based on model's projections of LFG generation and the collection efficiency.

❖ *Surface Water Modeling*

- The Surface water modeling simulates the development in the river beds and channel plans form caused by changes in the hydraulic regime that includes bank erosion, scouring and shoaling.
- It assists in analysis of alignments and dimensions of navigation channels for minimizing maintenance dredging, prediction sedimentation of water intakes, outlets, locks, harbors and reservoirs and forecast the impact of bridge, tunnel and pipeline crossings on river channel hydraulics.



❖ *Vehicular Emission Modeling*

- This modeling is used for predicting air pollution concentrations of carbon monoxide (CO), nitrogen dioxide (NO₂), particulate matter (PM), and other inert gases from idle or moving motor vehicles near highways.
- This model also estimates the length of queues formed by idling vehicles at signalized intersections.

❖ *Geospatial services*

- We offer a range of geospatial services that combines cost-effectiveness, speed, and reliability.
- Highly valued in the industry, our geospatial services address requirements of the mining, infrastructure, agriculture, and the healthcare sectors.



Geospatial
Services



MARINE SERVICES

❖ *CRZ Management Studies*

- To control, minimize and protect environmental damage to sensitive coastal stretches from unplanned human interference, The GOI, in 1991 issued a major notification “Coastal Regulation Zone rules” and amended in 2011, then in 2016 & 2018.
- It is an integrated approach to coastal zone problems and for sustainable development.

❖ *Marine Impact Assessment*

- The marine impact assessment methodology implements a combined midpoint/damage approach, linking all types of life cycle inventory results.
- New concepts and methods have been developed, especially for the comparative assessment of human toxicity and eco-toxicity.

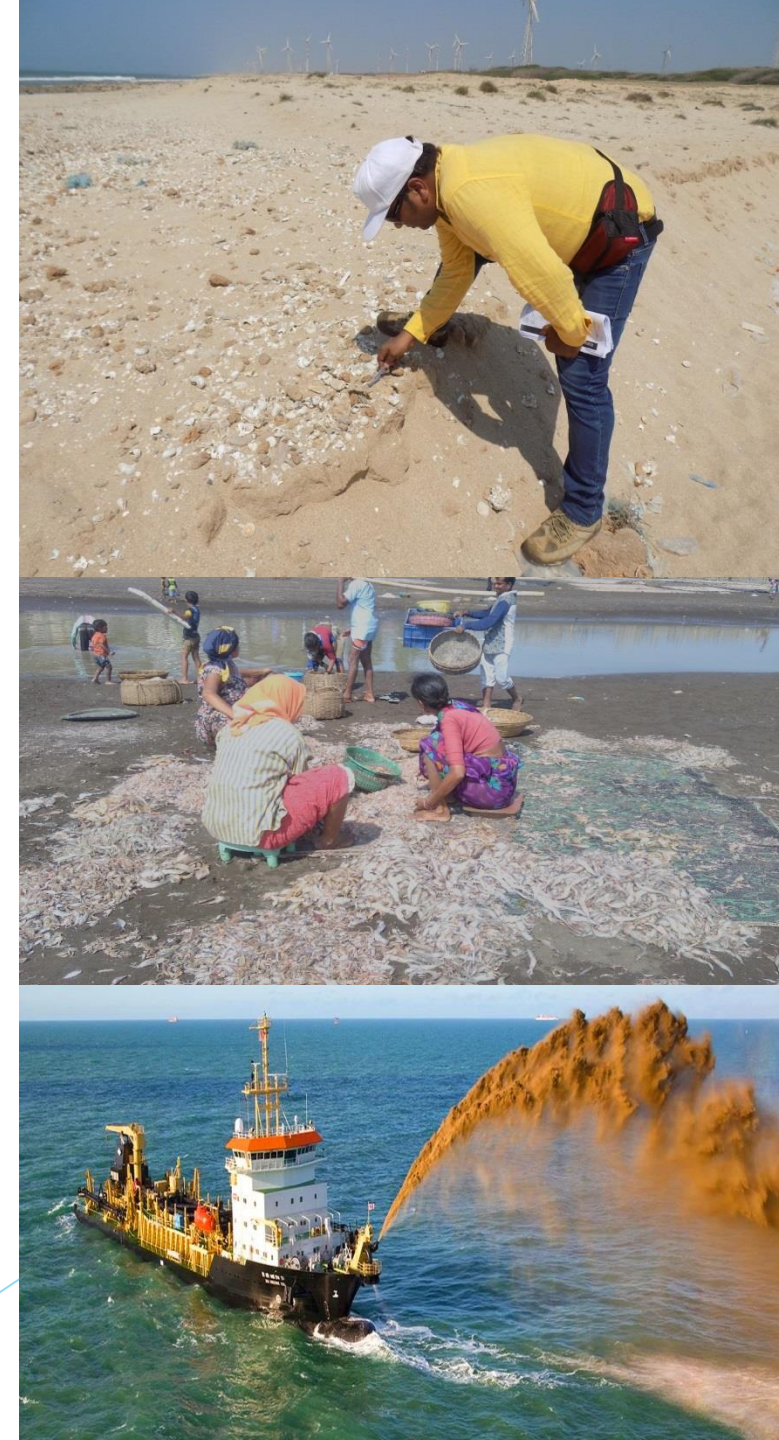


❖ *Marine Ecological Studies*

- The scientific study of marine ecology encompasses marine-life habitat, populations, and interactions among organisms and the surrounding environment.
- The impact of human activity such as medical research, development, agriculture, fisheries, and forestry is also studied under marine ecology.
- Marine studies address fundamental questions about ecological and evolutionary processes.

❖ *Brine Discharge Dispersion*

- Desalination of seawater produces brine, and discharges it into the sea.
- It is important to understand how brine is dispersed into the sea so that we can minimize its potential environmental impact.
- Modeling Studies on the effect of coastal water depth variations upon mixing and spreading of brine waste continuously being discharged are presented.



❖ *Offshore Sampling & Analysis*

- A diverse range of methods and equipment are used for obtaining samples from the sea and seabed, depending on the material or measurement required.
- Sampling methods and procedures are carefully analyzed and selected so as to take into account the high variability of most marine systems. Further testing is carried out in the laboratory.



Air Pollution Control

- ❖ Air pollution is often not visible to the naked eye as the size of the pollutants is smaller than the human eye can detect.
- ❖ Air pollution is becoming a major health problem that affects millions of people worldwide.
- ❖ We at AKONE, providing end to end solution for air pollution control system and equipment along with maintenance services.

❖ *Sources of Air Pollution*

- Burning of Fossil Fuels
- Agricultural activities
- Exhaust from factories and industries
- Mining operations



Water Pollution Control

- ❖ Sewage is the biggest pollutant of fresh water when discharged into them. Sewage is the waterborne waster of society and the discharge of untreated sewage into a river is very enormous and unhealthy.
- ❖ We at AKONE, provide the best solution for water pollution control for your industrial /residential unit in terms of ETP, STP, WTP, RO, dosing, chemicals, maintenance services, operation & maintenance of ETP/STP, etc.
- ❖ *Services for water management includes-*
 - Water preservation and Reuse
 - Cooling water treatment
 - General water treatment
 - Brine water treatment
 - Zero liquid discharge plants
 - Wastewater treatment
 - Effluent Treatment Plant



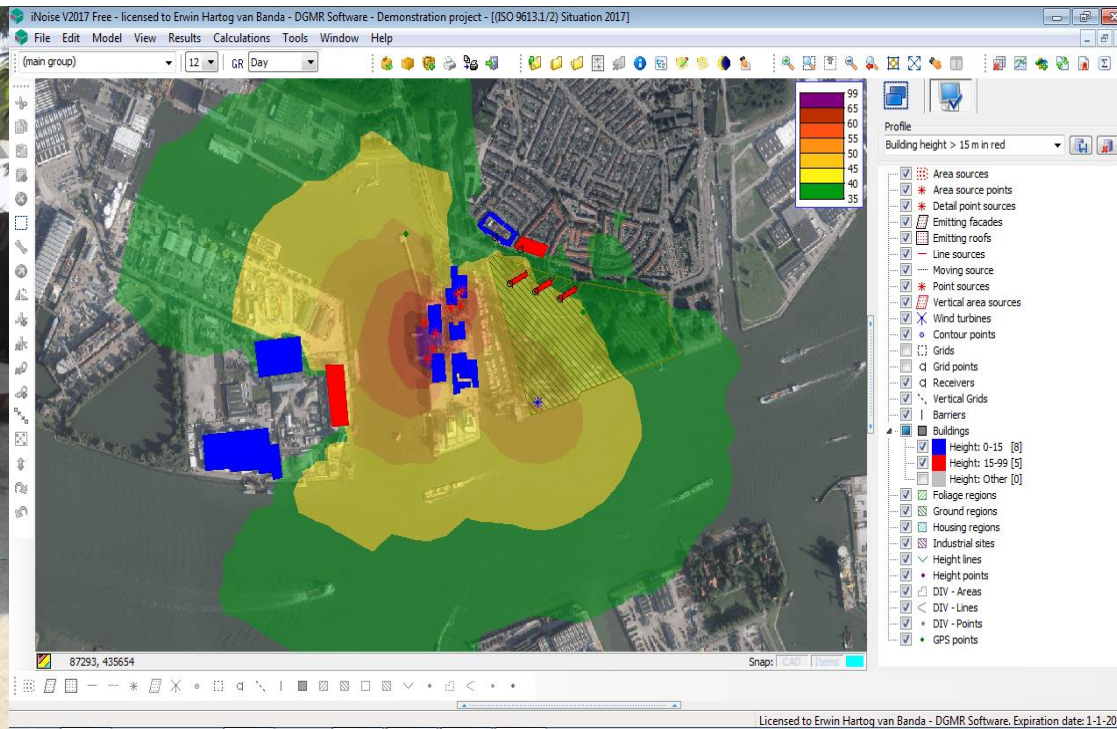
Overall Wastewater Treatment Plant efficiency

- ❖ The efficiency of a treatment system can be measured in terms of the percentage removal of these constituents.
- ❖ Common parameters of measurement are:
 1. **BOD**: Biochemical oxygen demand, measured in mg/L
 2. **COD**: Chemical oxygen demand, measured in mg/L
 3. **TSS**: Total suspended solids, measured in mg/L
 4. **TDS**: total dissolved solids, measured in mg/L
 5. **Nitrogen forms**: including nitrate and ammonia, measured in mg/L
 6. **Phosphate**: measured in mg/L (also of particular concern as a nutrient in eutrophication)
 7. **pH**: degree of acidity, measured as a number from 1 (most acid) to 14 (most alkaline)
 8. **Coliform bacteria count**: measured as most probable number per 100 mL (*Escherichia* and fecal coliform bacteria are most common indicators).



Noise Pollution Control

- ❖ Noise is a prominent feature of the environment including that from sources such as transport, industry and neighborhood.
- ❖ Noises (or impact of sounds) are transmitted through building materials from sound sources such as vehicular or foot traffic, banging, or objects being dropped to the floor and can also be associated with vibrations.
- ❖ We at AKONE, provide the recommendation as per study for noise generation, sources and machinery in use for best suited method to control noise at site and in work place.



Soil & Land Pollution Control

- ❖ Soil pollution is defined as the presence of toxic chemicals in soil, in high enough concentrations to pose a risk to human health and the ecosystem.
- ❖ Land pollution means degradation or destruction of earth's surface and soil, directly or indirectly as a result of human activities.
- ❖ Due to the lack of green cover, the land gets affected in several ways like soil erosion occurs washing away the fertile portions of the land.
- ❖ The increasing numbers of barren land plots and the decreasing numbers of forest cover is at an alarming ratio.



❖ *Sources of Soil/Land Pollution*

- Deforestation and soil erosion
- Agricultural activities
- Mining activities
- Overcrowded landfills
- Industrialization
- Construction activities
- Nuclear waste
- Sewage treatment

Waste Management

- ❖ Hazardous Waste Management Rules are notified to ensure safe handling, generation, processing, treatment, package, storage, transportation, use reprocessing, collection, conversion, and offering for sale, destruction and disposal of Hazardous Waste.
- ❖ We at AKONE, provide the best solution for waste management like Co-processing, waste to compost, waste to energy, reuse as alternative fuel, permission under rule 9, etc.

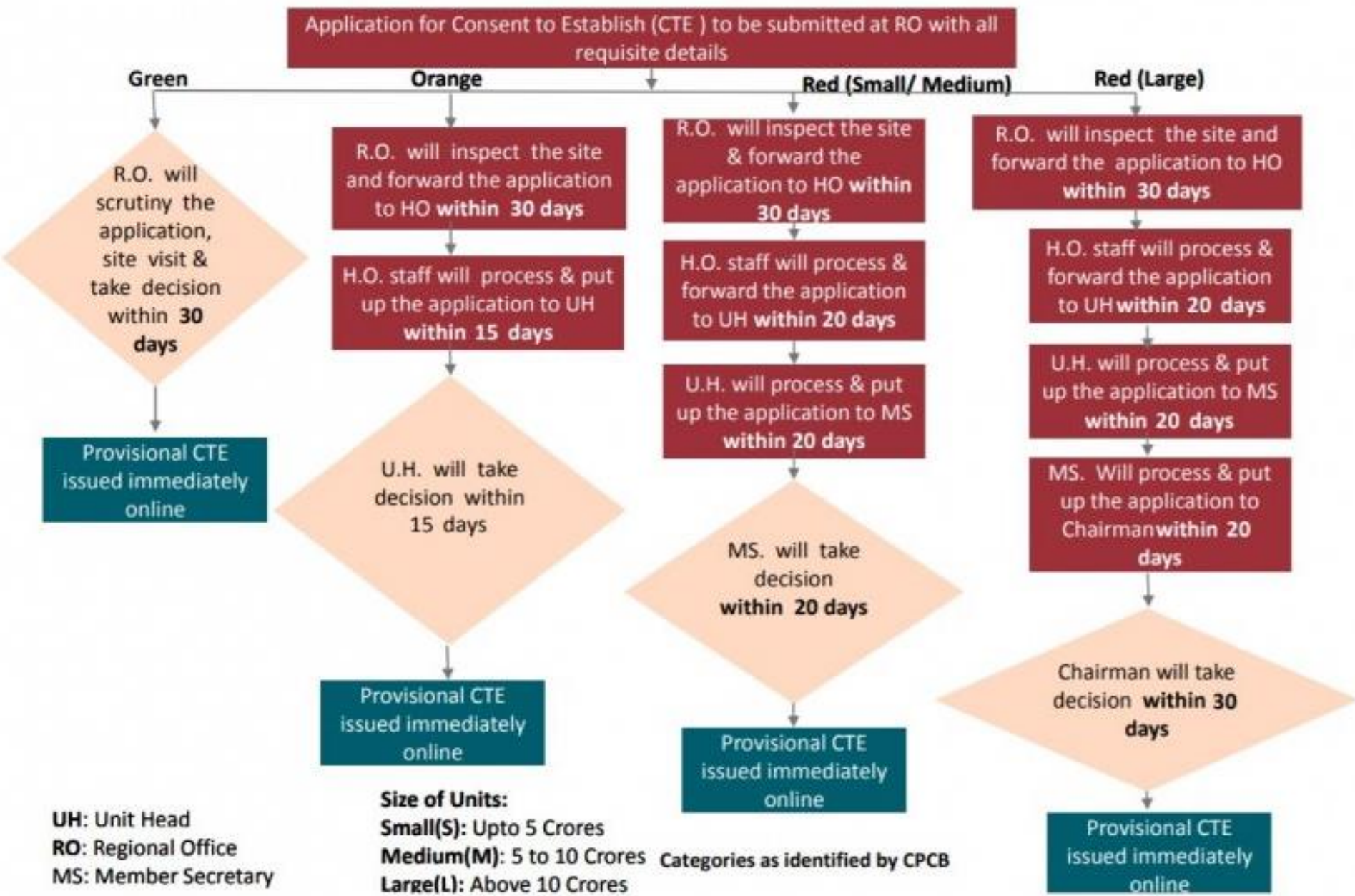


Ground Water Permission from CGWA

- ❖ As per the recent NGT direction, all existing industrial/infrastructure/mining projects which are drawing ground water and have not obtained NOC for ground water withdrawal from CGWA, either due to its coming into existence prior to formation of CGWA or due to exemption from obtaining NOC as per earlier guidelines shall apply to CGWA for NOC.
- ❖ All Industrial / Infrastructural / Mining Projects which are either existing, new or are under expansion and requiring to withdraw ground water have to obtain NOC from CGWA.
- ❖ **Procedure for granting renewal of NOC for ground water:**
 - Renewal of NOC for ground water withdrawal in Notified Area is accorded after checking and verification of compliance of conditions of NOC by the concerned Authorized Officer (District Magistrate / District Collector, Deputy Commissioner etc.).
 - The Authorized officer will forward the application to the concerned Regional Director of CGWB with his recommendation.
 - The Regional Director will process the application and forward it to CGWA for issuance of NOC.



AKN CTE from SPCB/GPCB

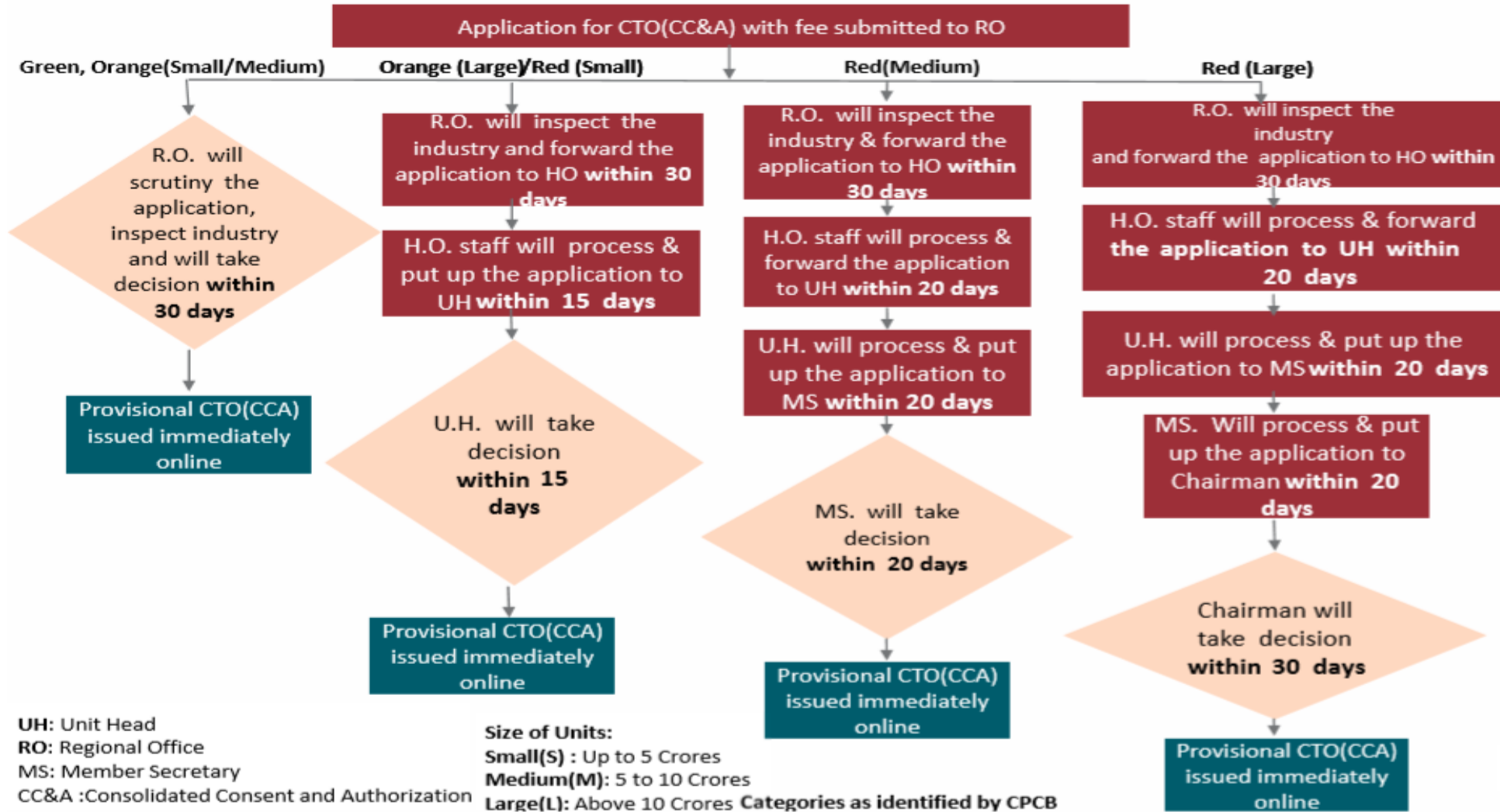


UH: Unit Head
 RO: Regional Office
 MS: Member Secretary

Size of Units:
Small(S): Upto 5 Crores
Medium(M): 5 to 10 Crores
Large(L): Above 10 Crores
 Categories as identified by CPCB

GPCB - Procedure for obtaining Consent to Operate(CC&A)

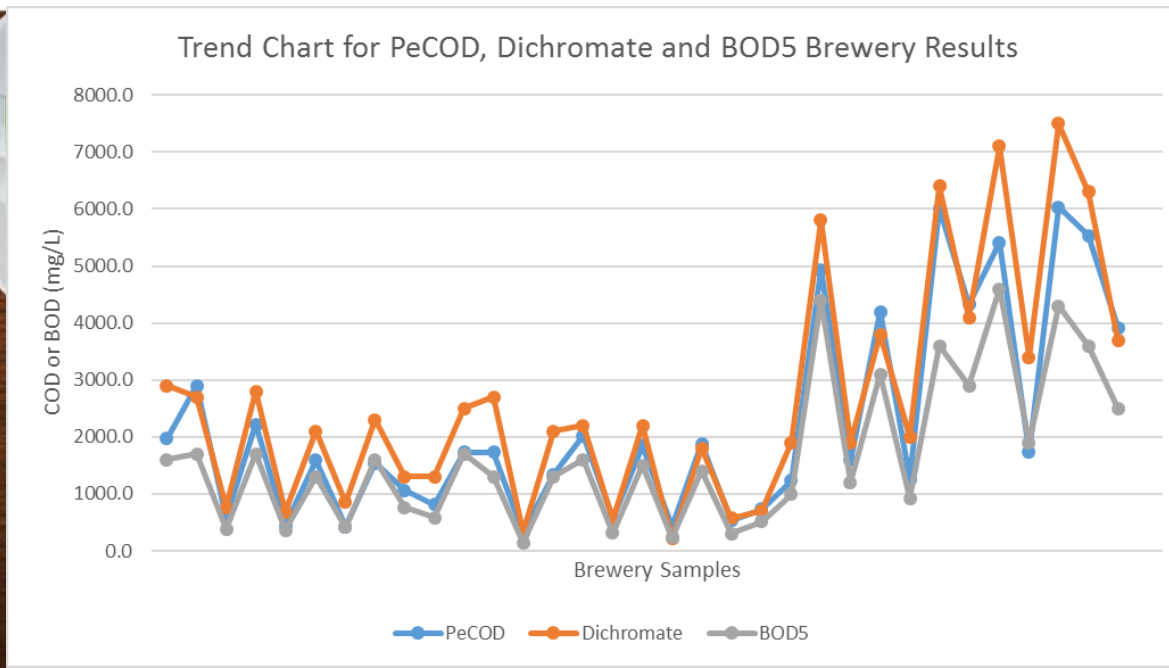
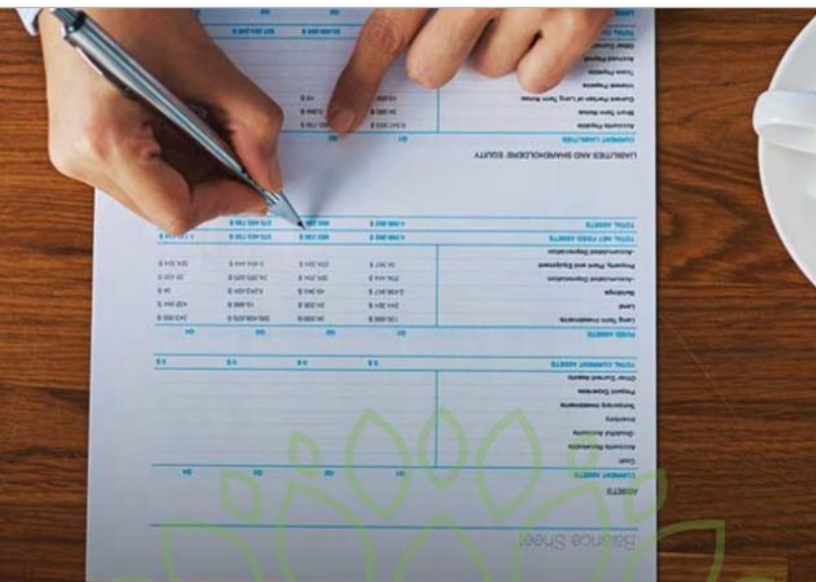
Maximum Number of Days for entire Process: 120 Days



<i>Environmental Audit</i>	Environmental auditing is essentially an environmental management tool for measuring the effects of certain activities on the environment against set criteria or standards.
<i>Energy Audit</i>	A energy survey is a practical step to identify, quantify and prioritize tangible opportunities to reduce energy use, costs and carbon emissions in a building or on a site.
<i>HAZOP</i>	A Hazard and Operability (HAZOP) study identifies hazards and operability problems
<i>Safety Audit</i>	<ul style="list-style-type: none"> ▪ Safety auditing is a core safety management activity, providing a means of identifying potential problems before they have an impact on safety.
<i>Clean Development Mechanism</i>	The Clean Development Mechanism is one of the “flexibility mechanisms” that is designed to promote projects that reduce emissions.
<i>Carbon Footprint</i>	A carbon footprint has historically been defined as “the total set of greenhouse gas (GHG) emissions caused by an organization, event, product or person.
<i>Biogenic CO₂ Emission</i>	A significant proportion of carbon dioxide emissions come from the combustion of biomass (biological material made from carbon, hydrogen and oxygen).
<i>Emission Trading Scheme (ETS)</i>	Emissions trading or cap-and-trade is a market-based approach used to control pollution by providing economic intensive.
<i>Carbon Reduction Commitment</i>	The Carbon Reduction Commitment Energy Efficiency Scheme , It has been estimated that the scheme will reduce carbon emission by 1.2 million tons of carbon per year by 2020.
<i>Water Budget/ Water Audit</i>	Water auditing is a method of quantifying water flows and quality in simple or complex systems, with a view to reducing water usage and often saving money on otherwise unnecessary water use.

Feasibility/Adequacy Report

- A feasibility study analyses the potential strengths and weaknesses of ETP/STP/WTP and assesses its overall workability of the same while adequacy report is the state or quality of being adequate or satisfactory.
- At AKONE, we provide the pre-feasibility, feasibility and adequacy report for the ETP/STP/WTP, etc. in terms of economic, technological, operative, external, entrepreneurial/financial, etc.



❖ *The design and size of the ETP depends upon:*

- Quantity and quality of the industries discharge effluent.
- Land availability.
- Monetary considerations for construction, operation and maintenance.

❖ *Area dimension depends on:*

- Quality of wastewater to be treated,
- Flow rate,
- Type of biological treatment to be used.
- We(AKONE) provide design, fabrication, supply, erection, testing and commissioning of ETP equipment such as tube settlers, clarifiers, surface aerators, diffused aeration systems, filtration systems etc.



TRAINING SERVICES

- ❖ AKONE offers the training programs to clients/consultants/individual who want to develop or understand.
- ❖ Few of training sectors as follows but no limited to:
 - Pollution control system and Management
 - Area expertise as per QCI Scheme – 12 Nos. of FAEs
 - EIA coordinator as per QCI Scheme – Sector specific
 - Waste water treatment and Bioremediation
 - Ground water contamination and its remediation
 - Air and noise pollution and its eradication
 - Pollution control device handling and maintenance
 - Environmental Laws and EC compliances
 - EIA Regulations
 - Risk Assessment – HAZOP, HAZID, Tree Analysis, QRA, RRA, etc.
 - Building and Constructions – Regulations and compliance
 - Forest and Wildlife clearance process and regulations
 - Environmental Tribulations and Solution
 - Green Belt Development and benefits
 - Land use and land cover strategies and Management
 - GIS- Software awareness
 - Air/Noise Modeling
 - Water Modeling
 - CRZ Regulations
 - SIA and Need Base Assessment
 - Water budgeting and Water management – Water balance
 - Industrial Effluent Treatment technologies Area Development and Township -

❖ All the development activities are classified into 40 sectors as per EIA notification in India.

S.No	Name of Industrial Sector/s	Schedule as per MoEFCC
1.	Mining of minerals including opencast / underground mining	1 (a) (i)
2.	Offshore and onshore oil and gas exploration, development & production	1 (b)
3.	River Valley projects	1 (c)
4.	Thermal power plants	1 (d)
5.	Nuclear power projects and processing of nuclear fuel	1 (e)
6.	Coal washeries	2 (a)
7.	Mineral beneficiation	2 (b)
8.	Metallurgical industries (ferrous & non-ferrous)	3 (a)
9.	Cement plants	3 (b)
10.	Petroleum refining industry	4 (a)
11.	Coke oven plants	4 (b)
12.	Asbestos milling and asbestos based products	4 (c)
13.	Chlor-alkali industry	4 (d)
14.	Soda ash Industry	4 (e)
15.	Leather/skin/hide processing industry	4 (f)
16.	Chemical fertilizers	5 (a)
17.	Pesticides industry and pesticide specific intermediates (excluding formulations)	5 (b)
18.	Petro-chemical complexes (industries based on processing of petroleum fractions & natural gas and/or reforming to aromatics)	5 (c)
19.	Manmade fibers manufacturing	5 (d)
20.	Petrochemical based processing (processes other than cracking & reformation and not covered under the complexes)	5 (e)
21.	Synthetic organic chemicals industry (dyes & dye intermediates; bulk drugs and intermediates excluding drug formulations; synthetic rubbers; basic organic chemicals, other synthetic organic chemicals and chemical intermediates)	5 (f)
22.	Distilleries	5 (g)
23.	Integrated paint industry	5 (h)
24.	Pulp & paper industry excluding manufacturing of paper from wastepaper and manufacture of paper from ready pulp without bleaching	5 (i)
25.	Sugar Industry	5 (j)
26.	Deleted	--

S.No	Name of Industrial Sector/s	Schedule as per MoEFCC
27.	Oil & gas transportation pipeline (crude and refinery/ petrochemical products), passing through national parks/ sanctuaries/coral reefs/ecologically sensitive areas including LNG terminal	6 (a)
28.	Isolated storage & handling of Hazardous chemicals (As per threshold planning quantity indicated in column 3 of schedule 2 & 3 of MSIHC Rules 1989 amended 2000)	6 (b)
29.	Air ports	7 (a)
30.	All ship breaking yards including ship breaking units	7 (b)
31.	Industrial estates/ parks/ complexes/areas, export processing Zones (EPZs), Special Economic Zones (SEZs), Biotech Parks, Leather Complexes	7 (c)
32.	Common hazardous waste treatment, storage and disposal facilities (TSDFs)	7 (d)
33.	Ports, Harbours, Break waters and Dredging	7 (e)
34.	Highways	7 (f)
35.	Aerial Ropeways	7 (g)
36.	Common Effluent Treatment Plants (CETPs)	7 (h)
37.	Common Municipal Solid Waste Management Facility (CMSWMF)	7 (i)
38.	Building and construction projects	8 (a)
39.	Townships and Area Development projects	8 (b)
Additional Sectors:		
40	Automobile and Auto Components	--
	Electroplating and Metal Coating	--
	Electrical and Electronics including component industry	--
	Glass and Ceramic Industry	--
	Food Processing	--



#	Name of the Project	Name of the Client	Year & Status
1	EC-Cement gridning unit at Hazira Surat 3(b) – Cat B	Sanghi Industries Ltd.	2018
2	EC - Thermal Power Plant 60-120 MW Kutch Gujarat	Sanghi Industries Ltd.	2018
3	EC - Isolated Storage of Ethanol and Biodiesel at Miraj Pol Maharastra.	Bharat Petroleum Corporation Ltd.	2018
4	CRZ clearance for already constructed Bridge over Tena Khadi Surat	Public Works Development R&B Surat	2018
5	EB-Asian Highway 48 passing through Jaladpara Wildlife Sanctuary under SASEC Road Connectivity Investment Program	Ministry of Road, Transport & Highway; Punj Llyod Ltd. Gurgaon	2018
6	EC -27 Drilling wells and 37 Exploratory Wells at North Tripura, Tripura Cat-A	Oil & Natural Gas Corporation Ltd.	2018
7	EC - Shreeji Pesticide, Dahej GIDC Gujarat 5(b) - Cat-A	Shreeji Pesticide, Dahej Gujarat	2018
8	EC - Pulp & Paper Manufacturing at Sayakha Dahej Gujarat - Cat -A	Emami Papers Mills Ltd.	2018
9	EC- Expansion in Pesticide Unit at Halol (Gujarat) - Cat-A	UPL Ltd	2018
10	EC- Expansion in Ammonium Sulphate by GSFC Vadodara - Cat- A	Gujarat State Fertilizers & Chemicals Ltd.	2018
11	EB-Electrified 3 rd line of Barkhera–Budni Project on Bhopal-Itarsi route MP	Central Railway Govt. of India	2017
12	CRZ clearance for PWD construction of anti-sea erosion bund at Palghar,MH	Maha PWD Mumbai	2017
13	CRZ clearance for PWD construction of anti-sea erosion bund at Alibaug, MH	Maha PWD Mumbai	2017
14	CRZ clearance for PWD construction of anti-sea erosion bund at Palghar MH	Maha PWD Mumbai	2017
15	CRZ clearance, wildlife clearance, forest and EC Jetty and CST terminal of GSFC Sikka Jamnagar Cat- A	Gujarat State Fertilizers & Chemicals Ltd., Sikka Unit	2017
16	CRZ clearance for land acquisition by INS Valsura at Valsura, Gujarat	INS Valsura	2017
17	CRZ clearance for Gas pipeline crossing Mehul Creek at Wadala, Mumbai	Mahanagar Gas Limited Mumbai	2017
18	Expansion of Organic Dye Manufacturing Unit at GIDC Vapi	Chempha Industries	2017
19	Proposed Project for the Manufacture of Chemical Fertilizer Saykha, Bharuch,	Kisan Shakti Fertilizer and Pesticides Pvt. Ltd.	2017
20	Expansion in Pesticide Manufacturing Plant ,RIICO Industrial Area, Rajasthan	HPM Chemical and Fertilizer Ltd	2017

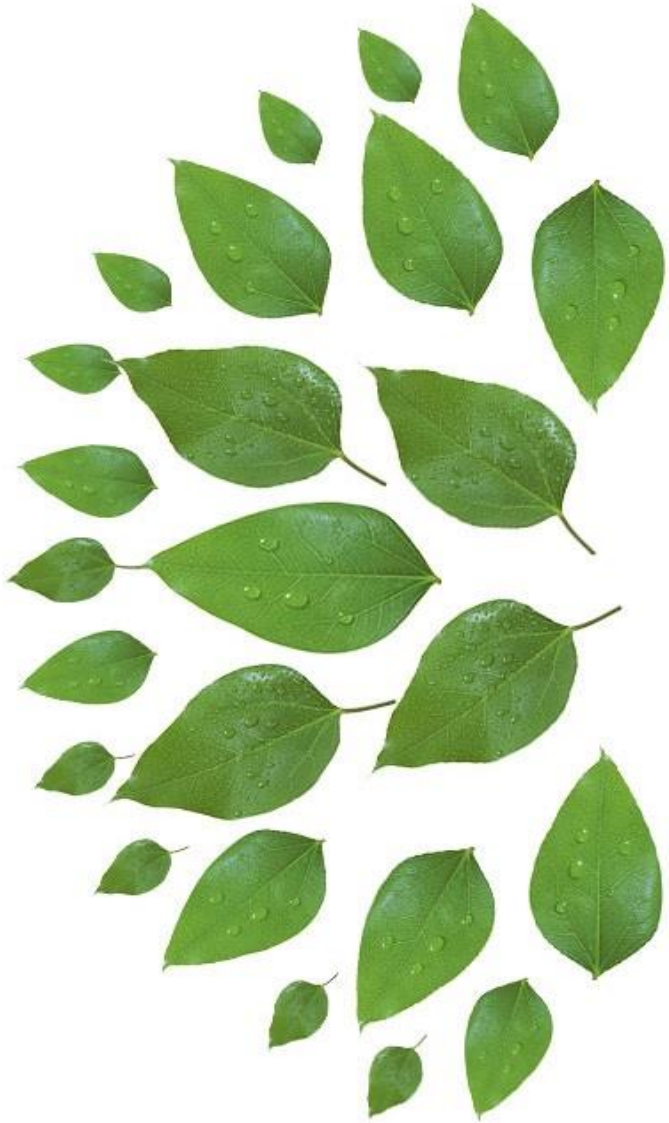
#	Name of the Project	Name of the Client	Year & Status
21	Expansion of API Bulk Drug Manufacturing Unit GIDC Vapi, Valsad,	Amoli Organics Pvt. Ltd.	2017
22	Manufacturing of Phenol Formaldehyde Resin GIDC Sarigam,Valsad	Amity Resins	2017
23	2 nd Stage Development of Commercial Karwar Port at Uttara Kannada	Kharwar Port, New Mangalore Port	2017
24	EC- Single Super Phosphate/Granular SSP Bharuch Cat B	Singham Bio crop Care Pvt. Ltd.	2017
25	EC-Expansion for Manufacturing of Api Bulk Drugs & Bulk Formulation, Sarigam, Valsad	Macloid Chemicals GIDC Sairgam	2017
26	Expansion for Rubber Chemicals and Specialty Chemicals vapi, Valsad.	Yasho Industries, Vapi unit – I and Unit –II	2017
27	EC- proposed Augmentation of facilities at Manmad Terminal , Maharashtra. Category- B 6(b)	IOCL Maharastra	2017
28	EC- proposed additional Tangages at in Delhi , Category- A & B 6(b)	IOCL Delhi	2017
29	EC-Expansion in Polyester Resin Unit Valsad Category B (Expansion) 5(f)	Technoplastimer	2017
30	EC-Expansion of organic pigment & pigment GIDCVapi, Valsad.	Kunder Chemicals Pvt. Limited	2017
31	EC -enhancement of existing recycle paper production Sarigam Valsad, Category- B 5(i) & 1 d	N.R. Agrawal Industries Ltd.	2016-2017
32	EC and CRZ for Restoration and Expansion of GMB Pindara Jetty Dwarka.Category- A 5(i)	Bombay Minerals Ltd.	2017
33	Proposed Speciality Chemicals, Godavari Cellulosics Ltd., Mumbai Category B (New) 5(f)	Godavari Cellulosics Ltd.	2016-2017
34	Proposed Project For The Manufacture of Bulk Drugs Valsad-Category B (Expansion) 5(f)	Deepak Cellulose	2016-2017
35	Strengthening and upgradation of Existing Cargo Handling Amreli Category B (New) 7(e)	Om Sai Navigations Pvt. Ltd.	2016-2017
36	Manufacture of Organic azo pigments Sarigam,ValsadCategory B (New) 5(f)	Arkil Chem Pvt. Ltd. (UNIT: II)	2016-2017
37	Proposed Modernization From Waste Paper to Agro Co-Gen Power Plant,Rupana, Punjab	M/s Satia Industries LTD.	2016-2017
38	EC- Greenfield Common Integrated Landfill & Incineration Facility. Category - 7(d) “A” Ahmedabad	Industrial Waste Management Systems (IWMS)	2016-2017
39	EC-proposed production of KRAFT Paper Power Plant Category – 1(d) & 5(i) A	Rajmax Paper Industries Morbi	2016
40	EC-Proposed Pesticides Intermediates, Fungicide, Herbicide and Insecticide,Category – 5(b) “A”	Heranba Industries Ltd.Bharuch,	2016-2017
41	API Drug Manufacturing Unit Vagra, Bharuch, Category B (New) 5(f)	Alliance Chemicals Ankleshwar (GJ)	2015-2016
42	Extra Neutral Alcohol plant for sugar molasses based Distillery,Champaran,Category B (New)5(g)	Majaulia Sugar Industries Pvt. Ltd. Kolkata	2016
43	M/s Pioneer Partners and by M/s Jai Dada Dohla Stone Mines. Cat B (New)1 (a)	M/s Pioneer Partners Dohla Stone Mines	2016
44	Stone Mines at Bhiwani, Haryana MLA 29.50 Ha. Cat B (New)	By M/s SBIPL Projects Limited.	2016

LIST OF CLIENTS

#	Name of the Project	Name of the Client	Year & Status
45	Limestone Mine Production Pulwama, Kashmir (J&K) Cat A.	M/s Dawar Cements Pvt. Ltd. Kashmir (J&K)	2016
46	Dumarkunda and Chirkunda Balu Ghat over Barakar River. Cat B (New)	M/s Shankar Coal Transport Agency, Dhanbad Jharkhand	2016
47	Serpentine Cluster Mining Project at Rajasthan. Cat-B (New) Cluster	M/s Green Marble Association Udaipur	2015-2016
48	Granite Mining at Bhilwara (Rajasthan) Cat B (New) Cluster	M/s R.V. Minchem Pvt. Ltd.	2015-2016
49	Sand Stone Mining Project Bundi (Rajasthan) Cat B (New) Cluster	M/s Panna Stone Suppliers	2015-2016
50	Granite Mining Project Area at Dungarpur, Rajasthan. Cat B (New) Cluster	M/s Chetak Minerals	2015-2016
51	Existing Masonary Stone Mining at Jhunjhunu, Rajasthan Cat B (New) Cluster	Smt. Rakha Mittal W/o Late Shri Yogesh	2015-2016
52	Quartz and Silica Sand Mining Project at Rajasthan. Cat B (New) Cluster	Smt. Asha Lata Berwa	2015-2016
53	Balu Sand Mining Munger, Bihar Cat.A (New)	M/s NM Food Products. 48,G Block, Sri Ganganagar, Rajasthan	2015-2016
54	Balu Sand mining , Bihar. Cat.A (New)	M/S Jai Mata Di Enterprises, Bihar	2015-2016
55	Mining of Boulder, Gravel and Sand at Bhood Kalan Block/YNR B-19 Cat B (New)	M/s Ganga Yamuna Mining Co. Distt. Yamuna Nagar, (Haryana)	2015
56	Mining of Boulder, Gravel and Sand at Bhood Majra Block/YNR B-20	Ganga Yamuna Mining Co. Distt. Yamuna Nagar, (Haryana)	2015
57	Mining of Boulder, Gravel and Sand at Begampur Block/YNR B-37,(Haryana)	M/s Yamuna Infradevelopers Pvt. Ltd.	2015-16
58	Mining of Boulder, Gravel and Sand at Bailgarh South Block/YNR B-2,	M/s Mubarikpur Royalty Company, Distt. Yamuna Nagar, (Haryana)	EC granted 2016
59	Mining of Boulder, Gravel and Sand at Nandgarh Block/YNR B-36,	M/s Apar Mines Management Services Pvt Ltd Sec- 62, Noida (U.P)	EC granted 2016
60	Mining of Boulder, Gravel and Sand at Kohliwala Block/YNR B-21 & 22	M/s Delhi Royalty Company Distt. Yamuna Nagar, (Haryana)	EC granted 2016
61	Mining of Sand at Lapra Block/YNR B-10	M/s Apar Mines Management Services Pvt Ltd Sec- 62, Noida (U.P)	EC granted 2016
62	Mining of Boulder, Gravel and Sand at Mandewala Block/YNR B-38	Saharanpur Mines Management Services Pvt Ltd, Saharanpur, (U.P)	EC granted 2016
63	Mining of Boulder, Gravel and Sand at Jaidhar Block/YNR B-34	Saharanpur Mines Management Services Pvt Ltd, Saharanpur, (U.P)	EC granted 2016
64	Mining of Sand at Gumthala North Block/YNR B16	Sh. Jogender Singh S/o Mahinder Singh, Rohtak (Haryana)	EC granted 2016
65	Mining of Sand at Pobari Block/YNR B-11	M/s Development Stratigies India Pvt Ltd. Yamuna Nagar (Haryana)	EC granted 2016
66	Mining of Boulder, Gravel and Sand at Devdhar Block/YNR B-24	M/s. Northern Royalty Company Distt. Yamuna Nagar, (Haryana)	2016
67	Mining of "Stone along with associated Minor Minierals" at, Haryana	M/s Tirupati Viniyoge Private Limited.	2015-2016

#	Name of the Project	Name of the Client	Year & Status
68	Mining of "Stone along with associated Minor Minerals" at Mahendergarh	M/s Madaan Associates, New Delhi	2015-2016
69	Stone Mining Village Gere, District Gaya, Bihar Cat.B (New)	M/s Katyayni Contractors Pvt. Ltd. 144, Parev, Bihta, Patna	2015-2016
70	Stone Mining Village Gera, District Gaya, Bihar Cat.B (New)	M/s Mahadev Enclave Pvt. Ltd. B-37, Jaipur, Rajasthan	2015
71	Stone Mining Village Mirzapur, District Gaya, Bihar Cat.B (New)	M/s Sainik Foods Pvt. Ltd. Muradabad, U.P.	2015-2016
72	Nandnaur Sand unit, Sonipat.Cat.A (New)	M/s Dahiya Traders	2015-2016
73	Tikola 1 sand unit, Sonipat. Cat.A General conditional apply	M/s DSP Associates	2015-2016
74	Tikola 2 sand unit, Sonipat. Cat.A General conditional apply	M/s Anand Singh & Company	2015-2016
75	Jainpur 1 Sand unit, Sonipat. Cat.A General conditional apply	M/s Shyam Jaina Ram	2015-2016
76	Jainpur 2 sand unit, Sonipat. Cat.A General conditional apply	M/s Yodha Mines & Minerals	2015-2016
77	Bega-Chandauli-Pabnera sand unit Cat.A General conditional apply	M/s Aleron Consultants	2015-2016
78	Sand Mining at Gyaspur-Rasulpur Sand Unit Cat.A General conditional apply	M/s Ultimate Group	2015-2016
79	Barauli 2 Sand unit, Sonipat.Cat.A	M/s Tekno Exports	2015-2016
80	Mining of Boulder, Gravel and Sand at PiPli Cat.B1 (New)	M/s. Paramjeet Singh Distt. Yamuna Nagar	2015-2016
81	Mining of Boulder, Gravel and Sand at Malikpur Khadar Cat.B1 (New)	M/s. Karaj Singh Distt. Yamuna Nagar	2015-2016
82	Stone Mining at Bharatpur (RJ) Cat.A (New)	M/s Samun Khan Bharatpur	2015-16
83	Stone Mine at Mahendergarh (Haryana).Cat.B1 (New)	M/s Gradient Business Consulting Pvt. Ltd.	2016
84	Dry River bed mining of Sand, Bajri Saharanpur (UP) EC Compliance	M/s Mohd. Inam; M/s Aalam ; M/s Vikas Agarwal & Wajid Ali	2015
85	River bed mining of Sand, Bajri and Boulders Saharanpur (UP) EC compliance	M/s Mehmood Ali & Dilsad; M/s Amit Jain & Naseem	2015
86	Riverbed bajri mining at Kantali River, Sikar, Rajasthan. Cat A	SH. M.S. Ratnawat, Jaipur	2015-2016
87	Residential plotted colony along with group housing project located at , Gurgaon	Supertech limited	2015
88	Residential Plotted colony project located at Vill- Naraungpur, Gurgaon	Revital Reality Pvt. Ltd.	2015
89	Affordable group housing colony project at village Naraungpur,, Gurgaon	Revital Reality Pvt. Ltd.	EC Granted 2015
90	Affordable group housing colony project at village Fazilpur Jharsa, Gurgaon	Sarvapriya Securities Pvt. Ltd.	EC Granted 2015

#	Name of the Project	Name of the Client	Year & Status
91	Affordable group housing project at vill- Chauma, Gurgaon	Lotus Realtech	EC Granted 2015
92	Affordable Group Housing at Vill- Daulatabad,, Gurgaon	JMK Holdings Pvt. Ltd.	EC Granted 2015
93	Synthetic Organic Chemical at GIDC Sachin, , Surat Category –B(New Project)	M/s Parishi Chemichal LLP, GIDC Sachin Dist- Surat (Gujarat)	2015
94	EC-Common Incineration System at Sachin GIDC Surat Category –A(New Project)	M/s Thakorji Enviro Techno Pvt. Ltd. GIDC Sachin Surat (Gujarat)	2013-2014
95	EC- proposed captive MUF Resin Manufacturing in Existing Board unit Cat –A	M/s Hi-Tech Board Pvt. Ltd. Ninat Surat	2012-2014
96	Expansion of Pesticide Unit Kutch, Gujarat, Category-A	M/s Excel Corp Care Limited Gajod Kachch (Gujarat)	2012-2013
97	Crimson Court,Bhatar, Surat, Category B (without EIA) (New project)	M/s. S.U. Enterprise	2012
98	Shreepad Antillia, Surat. Category B(without EIA) (New project)	M/s. Sahaj Enterprise	2012
99	Sky Heaven,Surat. Category B(without EIA)(New project)	M/s. Sky Heaven Developers	2012
100	EC Secondary metallurgical Project Category-B (New project)	M/s China Steel Corporation Pvt. Ltd., GIDC Dahej, Bharuch,	2012
101	EC-Synthetic organic and inorganic chemical unit.Category- B (New project)	M/s Eskay Iodine Pvt. Ltd., GIDC Jhagadia, Bharuch Gujarat	2012
102	Proposed Synthetic Organic Chemical Unit Dahej, Bharuch, Cat-B(New project)	M/s. Navin Fluorine International Limited, GIDC Dahej, Bharuch	2012
103	EC - Garden City Township and Area Development, Category-B	M/s Mansi Realty Pvt. Ltd.	2012
104	EC - Orion Textile Market Township and Area Development,Category-B	Orion Textile Market,Sahara Darwaja,Surat	2012
105	Proposed Expansion of Cement Grinding Unit ,Assam.Category-B	K.D. Cements	2012-2013
106	EC - CMJ Breweries PL, Grain Based Distillery Meghalaya Cat- A (New project)	M/s. CMJ Breweries Pvt. Ltd., Maghalaya	2011-12
107	EC - GLF Developers (I) Private Limited, Category: B(New project)	M/s. GLF Developers (I) Private Limited, Nalbari, Assam.	2012
108	EC - Township and Area Development, Vedant City.Category –B(New project)	M/s Bipin T. Shah & Others at Kharwasa Surat.	2011-2012
109	Compliance of Cement plant at Assam	Purbanchal Cements Limited	2012
110	Compliance EC for Expansion and Addition of Metal Avis Machine Pvt. Ltd. Cat-A	Avis Machine Pvt. Ltd. GIDC Sachin Dist. Surat, Gujarat	2012
111	Compliance for EC of Garden Silk Mills Ltd. Surat.Category-A	Garden Silk Mills Ltd. Village Jolwa, taluka Palsana, Dist- Surat	2013
112	Compliance EC for Expansion in Existing Calcined & Fused Products. Cat-A	Orient Abrasive Limited, GIDC Porbandar, Gujarat	2013
113	Compliance EC for Resin Manufacturing Unit.Category-A	Gujarat Colourlam Pvt. Ltd. Surat	2013



**THANKING
YOU....!**

